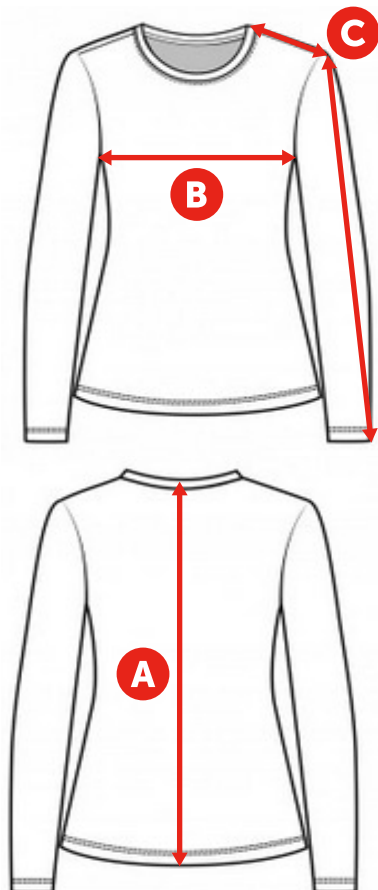


# SIZING CHART

## WOMEN'S LONG SLEEVE T-SHIRT

	<b>XS</b>	<b>S</b>	<b>M</b>	<b>L</b>	<b>XL</b>	<b>2XL</b>	<b>3XL</b>
<b>A BODY LENGTH:</b>	25"	25.5"	26"	27"	27.5"	28.5"	29"
<b>B BODY WIDTH ACROSS CHEST FULL:</b>	30"	31"	35"	37"	41"	43"	45"
<b>C SLEEVE LENGTH:</b>	29"	30"	31"	31"	32"	33"	33.5"
<b>MEASURE AROUND CHEST OF GARMENT:</b>	32"	33"	37"	39"	43"	45"	47"



### HOW TO MEASURE:

**BODY LENGTH:** Lay garment flat (face down). Measure from centre back neckline seam straight down to bottom of the front hem.

**BODY WIDTH:** Lay garment flat. 1" below the armhole flat measure the garment across the chest.

**SLEEVE LENGTH:** Lay garment flat (face down). Measure from centre back neck to outer edge of shoulder seam, then along outer edge to sleeve end.

\*all measurements are in inches\*